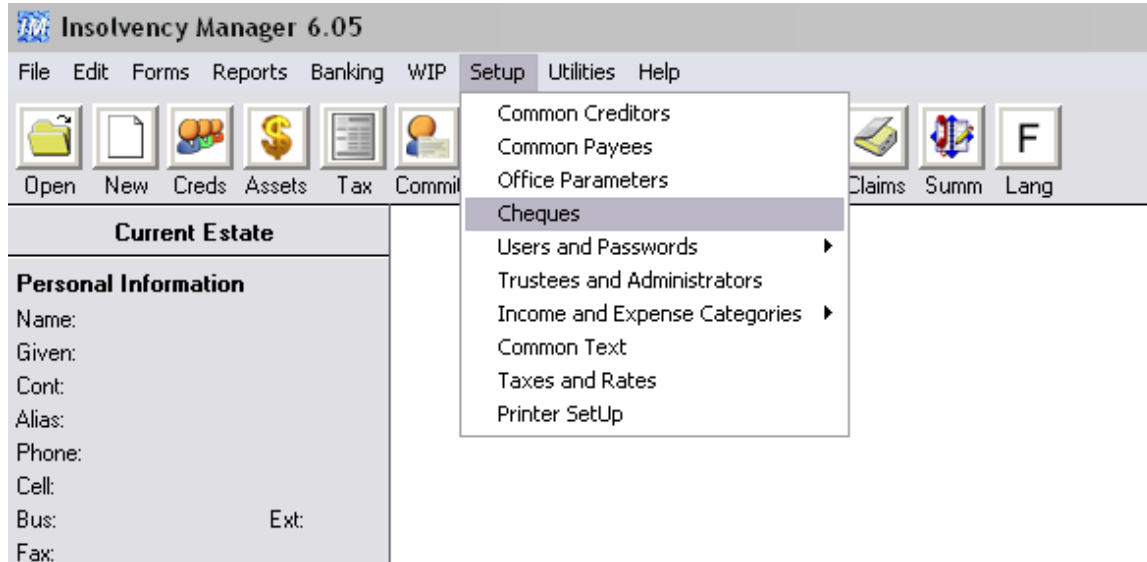


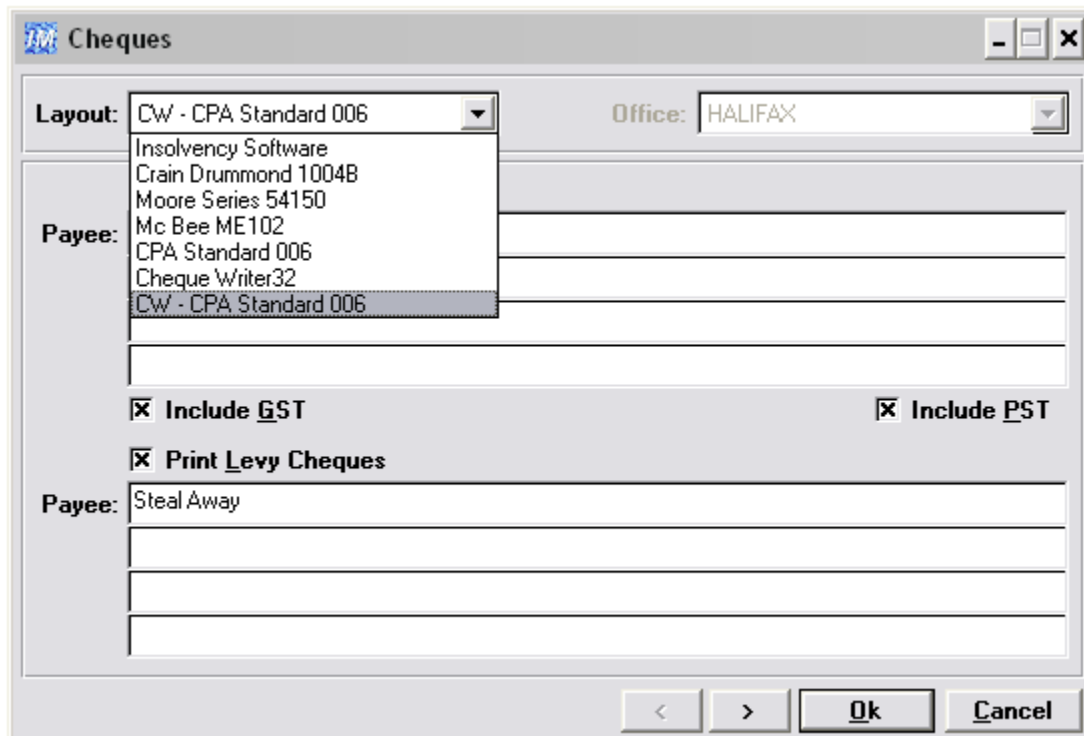
Instructions for Cheque Layout: CW – CPA Standard 006

For users currently using Cheque Writer32: Insolvency Manager now allows users to print CPA Standard 006 cheques directly to blank cheque stock by using the “CW – CPA Standard 006” layout. In order to use this option users must select “CW – CPA Standard 006” as the Layout in the Cheques function under the Setup menu.

To change the cheque printer, go to Setup > Printer Setup.



A new screen will appear. Select CW-CPA Standard 006 as the layout type and click 'OK'.



Users printing with Cheque Writer32 were able to print multiple cheques for more than one bank account at a time. However, the "CW – CPA Standard 006" layout works in the same manner as the other Insolvency Manager internal cheque options and prints by bank account. What this means is that on the Print Cheques function selection window, under the "Banking \ Cheques Processing" menu, users now must select a particular bank account they want to print cheques for or they must select the same Keyname in the Keyname fields.

